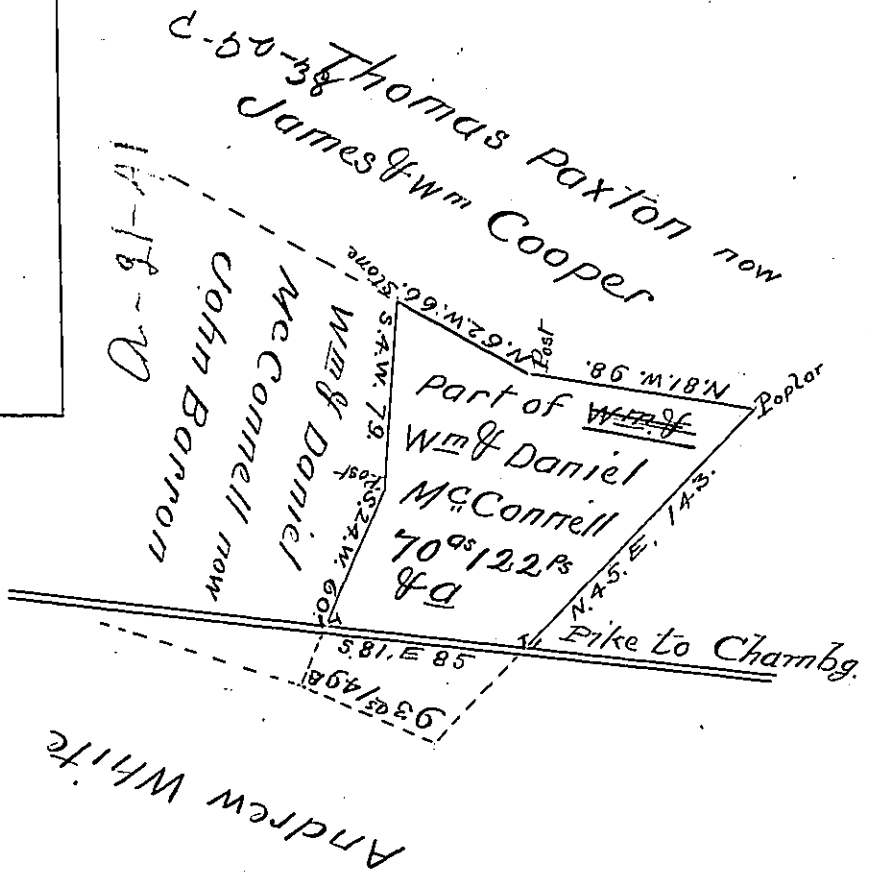


Course	Dis.	N	S	E	W	MD
1	S. 81. E. 85	—	133	84.0	—	
2	N. 45 E 143	101.1	—	101.1	—	
3	N. 81 W. 98	15.3	—	—	96.8	
4	N. 62 W. 66	31.0	—	—	58.3	
5	S. 4 W 79.5	—	79.3	—	5.6	
6	S. 24 W. 60	—	—	54.8	24.4	
		<u>147.4</u>		<u>147.4</u>		<u>185.1</u> <u>185.1</u>



Situate in Todd Township Fulton County formerly Air Township Bedford County, Containing Seventy acres & 122 perches & the usual allowance of Six per cent for Roads &c. Surveyd October 19<sup>th</sup> 1854 Being part of a larger tract of 93 acres and 149 perches and the usual allowance of Six per cent for roads &c. Surveyd on an Order of Survey granted to Daniel McConnell & William dated the 12<sup>th</sup> August 1766 No 842

Andrew J. Fore C.S.

To J. Porter Brawley Esqr S. G.

J. P. Brawly Sir

John Barron desires a patent for this 70<sup>as</sup> 122<sup>Ps</sup>

IN TESTIMONY that the above is a copy of the original remaining on file in the Department of Internal Affairs of Pennsylvania, made conformably to an Act of Assembly approved the 16th day of February, 1833, I have hereunto set my Hand and caused the Seal of said Department to be affixed at Harrisburg, this Twenty eighth day of March 1904.

*Luca B. Brown*  
Secretary of Internal Affairs.